

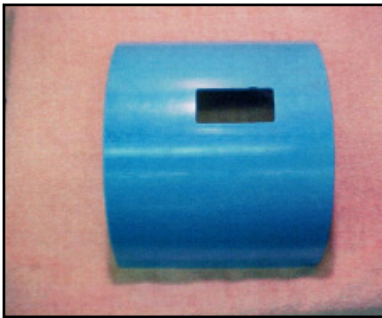
Installation Instructions



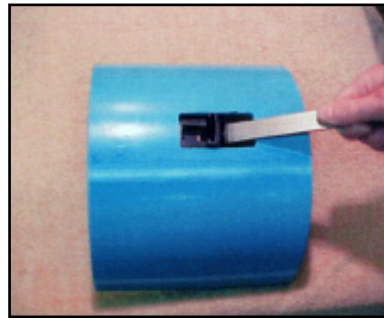
1. The following will be used for installation (left to right): Gate bottom gasket, Gate top, spring clip, installation tool.



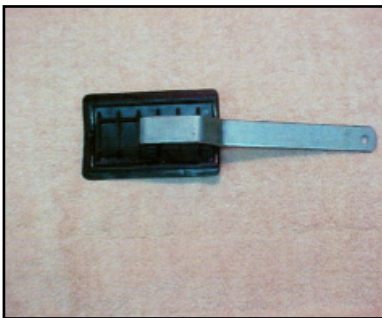
5. Insert gate bottom gasket into the hole.



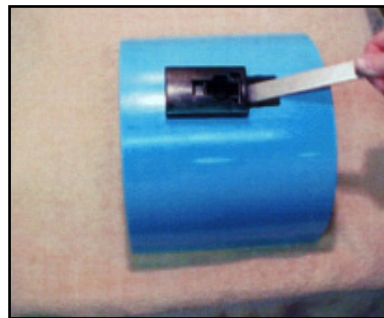
2. The hole dimension on the pipe should measure 1.25" x 3.325"



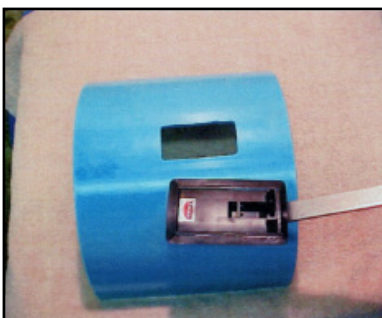
6. Make sure front side of gate bottom gasket faces up through hole.



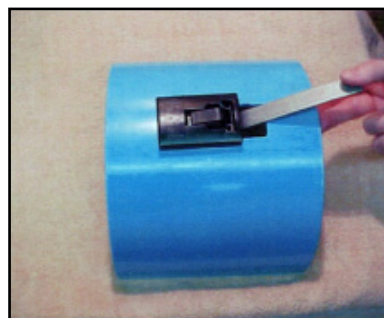
3. Insert tool into the back of the bottom gasket.



7. Using tool, place gate top on gate bottom gasket.



4. Turn the tool over so that front side of the gasket bottom gasket faces up.



8. Snap spring clip into place.